

Sada diagramů č. 13c - Zadání 21. 1. 2016 / Kontrola 28. 1. 2016



Diagram 1 – Bílý na tahu dá mat 1. tahem

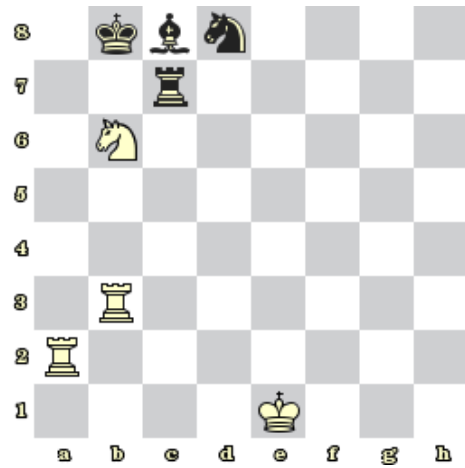


Diagram 2 – Bílý na tahu dá mat 1. tahem

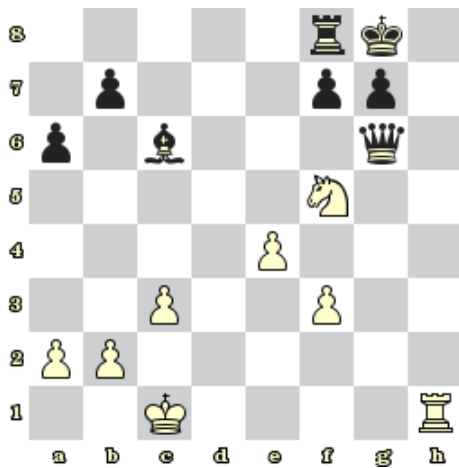


Diagram 3 – Bílý na tahu dá mat 1. tahem

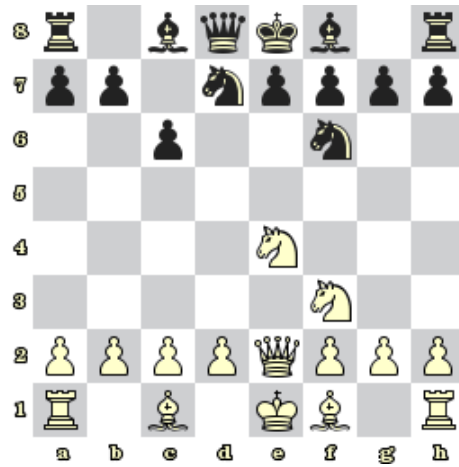


Diagram 4 – Bílý na tahu dá mat 1. tahem



Diagram 5 – Bílý na tahu dá mat 1. tahem

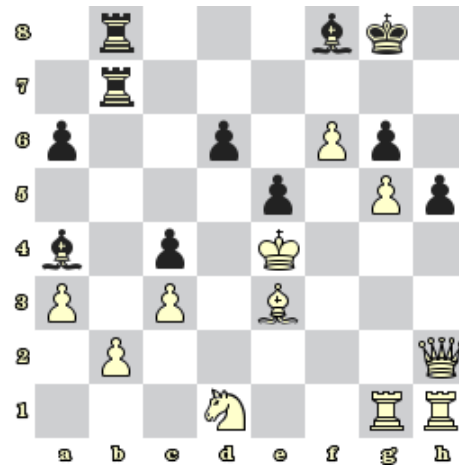


Diagram 6 – Černý na tahu dá mat 1. tahem

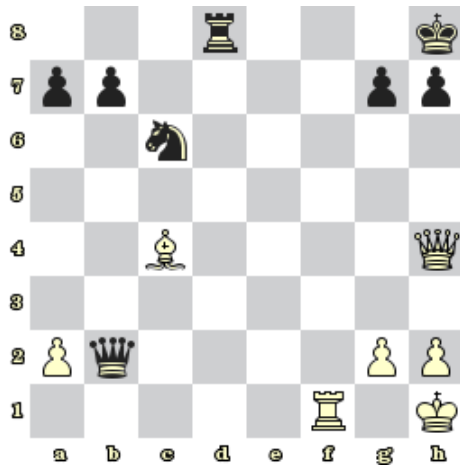


Diagram 7 – Bílý na tahu dá mat 3. tahem

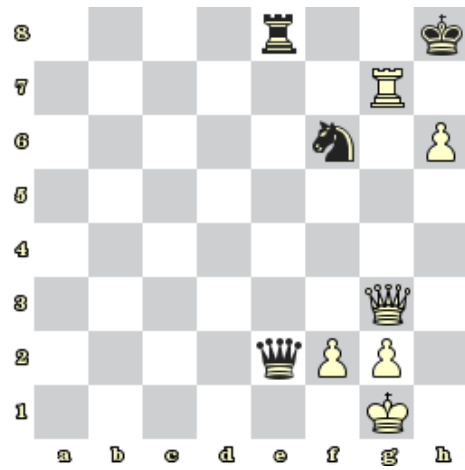


Diagram 8 – Bílý na tahu dá mat 2. tahem

Bonusové diagramy

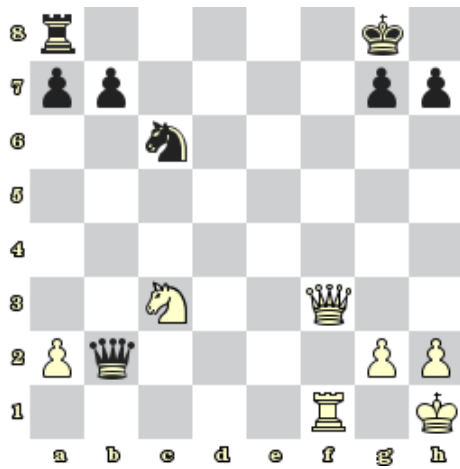


Diagram 9 – Bílý na tahu dá mat 2. tahem

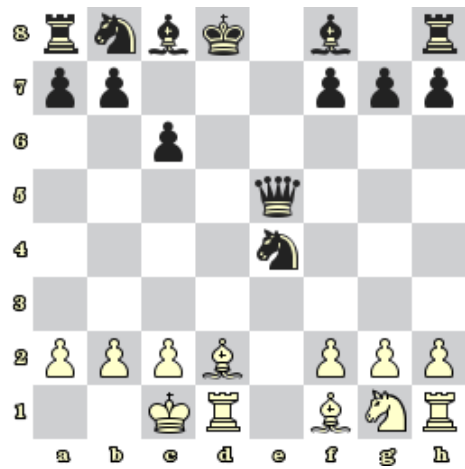


Diagram 10 – Bílý na tahu dá mat 2. tahem