

Sada diagramů č. 20c - Zadání 7. 4. 2016 / Kontrola 14. 4. 2016

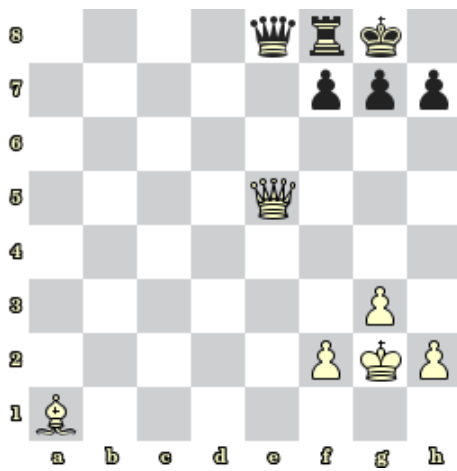


Diagram 1 – Bílý na tahu dá mat 1. tahem

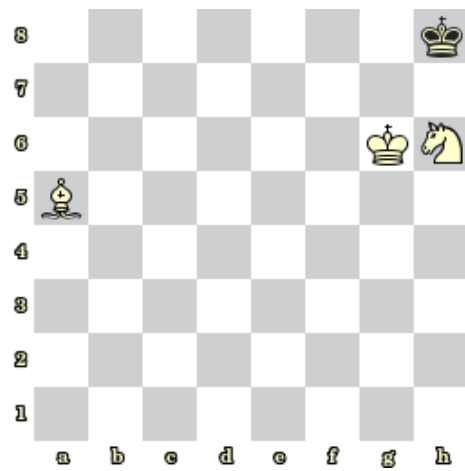


Diagram 2 – Bílý na tahu dá mat 1. tahem

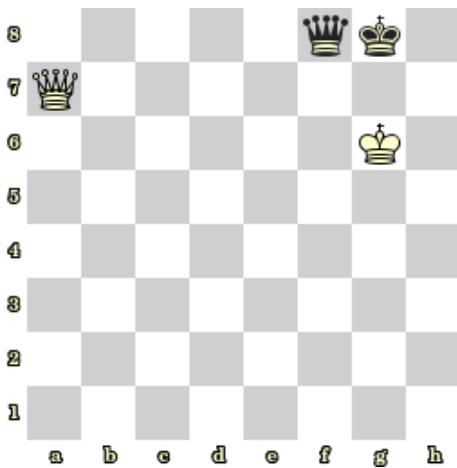


Diagram 3 – Bílý na tahu dá mat 1. tahem

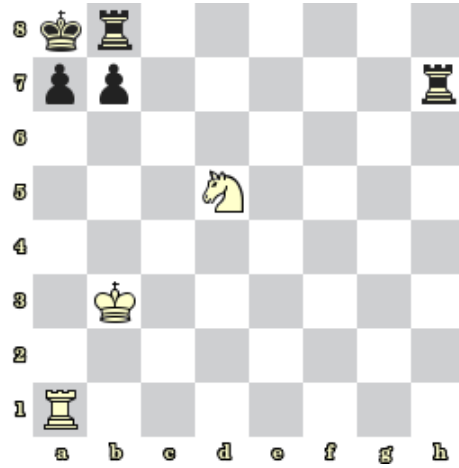


Diagram 4 – Bílý na tahu dá mat 1. tahem

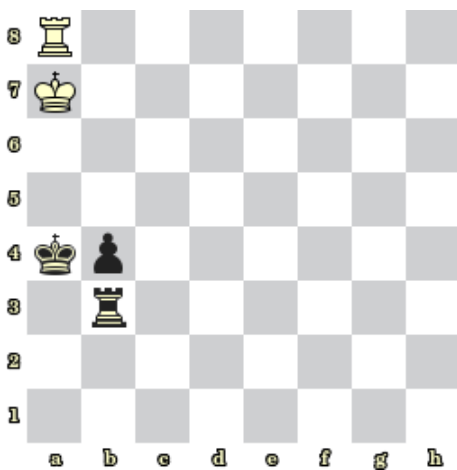


Diagram 5 – Bílý na tahu dá mat 1. tahem

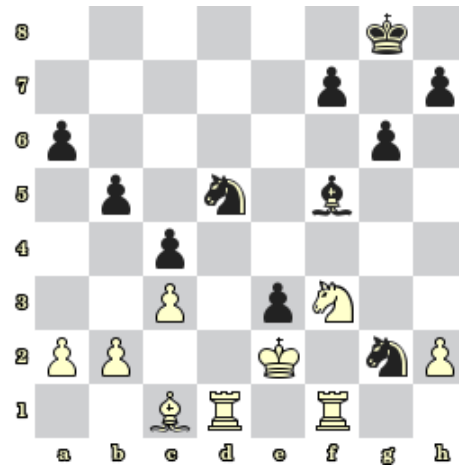


Diagram 6 – Černý na tahu dá mat 1. tahem

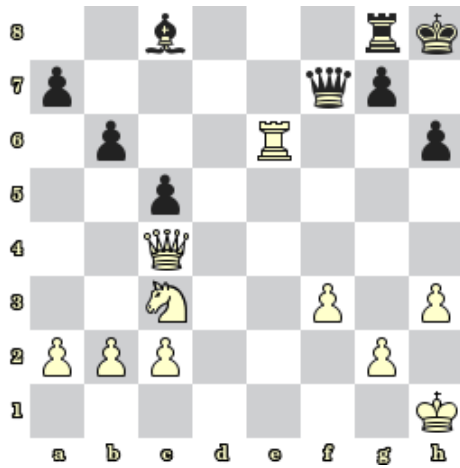


Diagram 7 – Bílý na tahu získá černou dámu

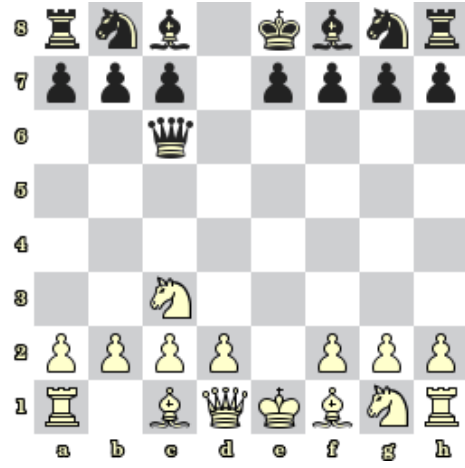


Diagram 8 – Bílý na tahu získá černou dámu

### Bonusové diagramy

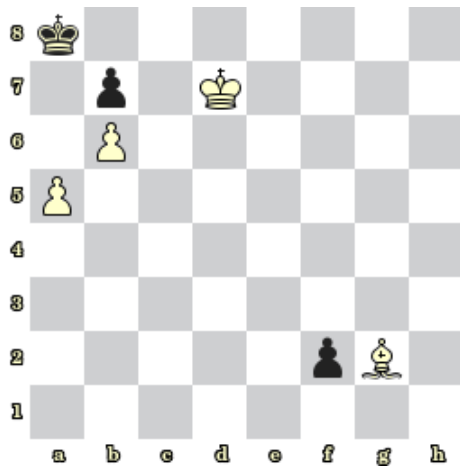


Diagram 9 – Bílý na tahu dá mat 2. tahem

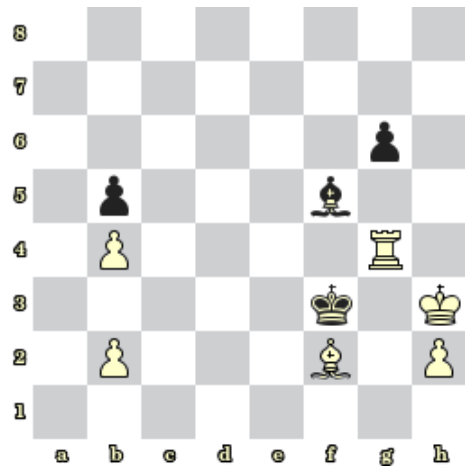


Diagram 10 – Černý na tahu dá mat 2. tahem