

Sada diagramů č. 21b - Zadání 14. 4. 2016 / Kontrola 21. 4. 2016

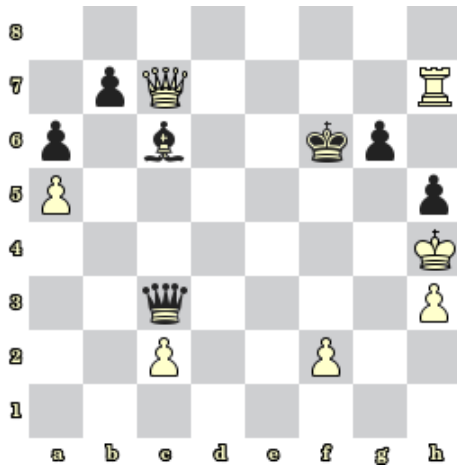


Diagram 1 – Černý na tahu dá mat 2. tahem

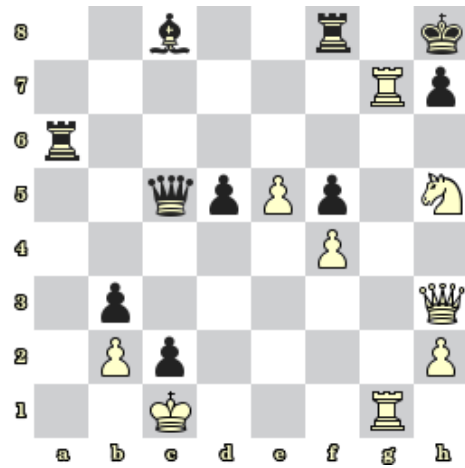


Diagram 2 – Bílý na tahu dá mat 2. tahem

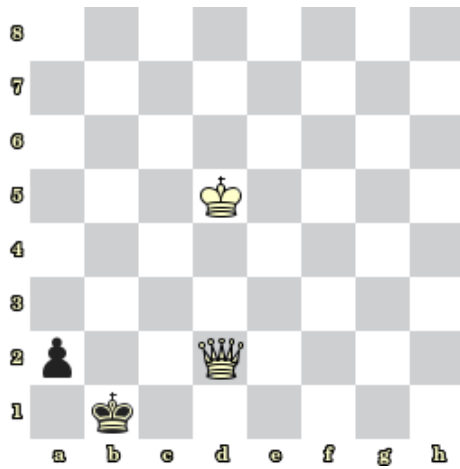


Diagram 3 – BNT. Jaký je nejlepší tah? Jak skončí partie?

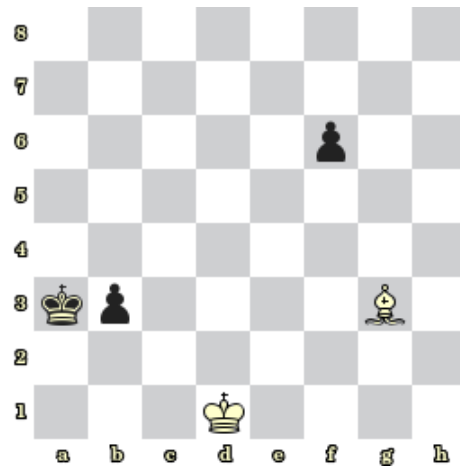


Diagram 4 – BTN. Jaký je nejlepší tah? Jak skončí partie?

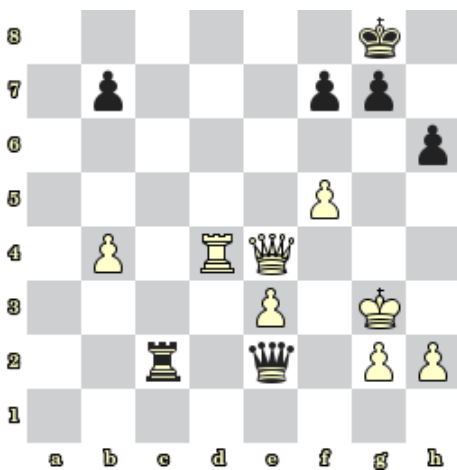


Diagram 5 – Bílý na tahu. Najděte matový útok

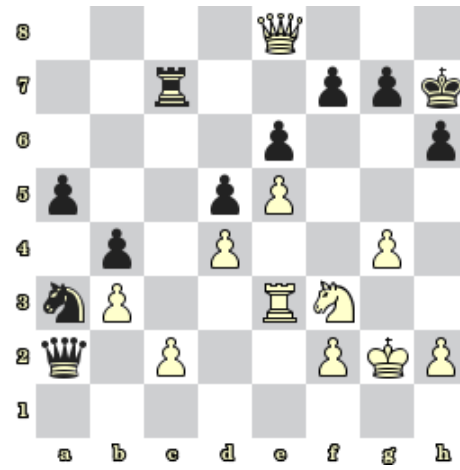


Diagram 6 – Bílý na tahu. Najděte matový útok

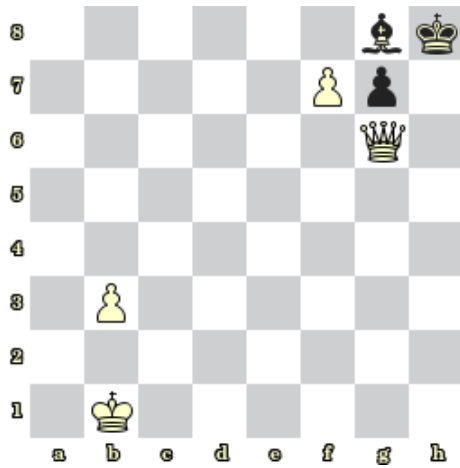


Diagram 7 – Bílý na tahu dá mat 2. tahem

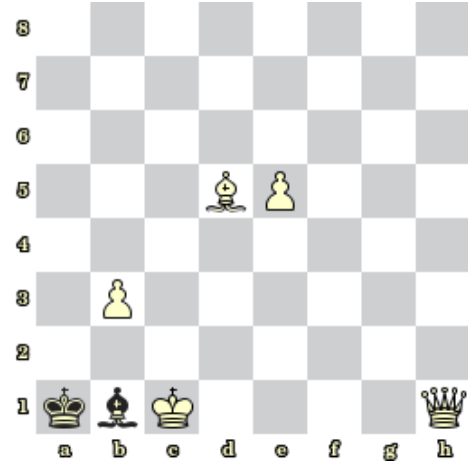


Diagram 8 – Bílý na tahu dá mat 2. tahem

### Bonusové diagramy

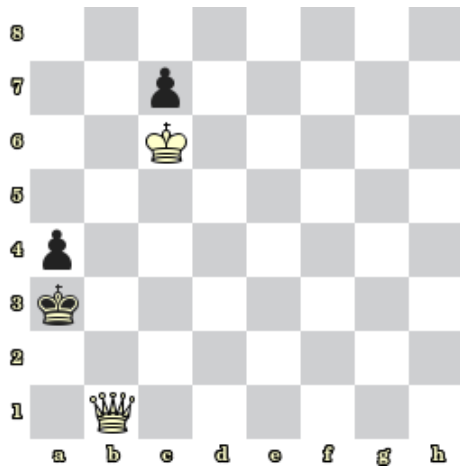


Diagram 9 – Bílý na tahu dá mat 3. tahem

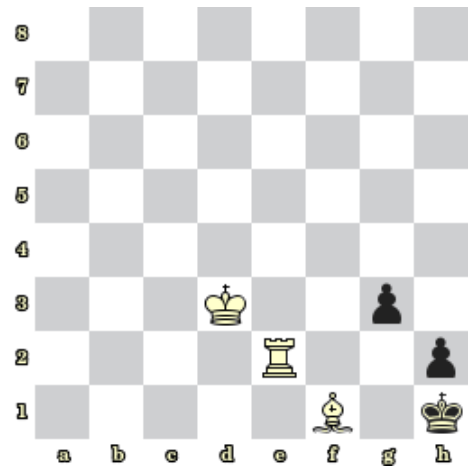


Diagram 10 – Bílý na tahu dá mat 3. tahem