

Sada diagramů č. 27b - Zadání 26. 5. 2016 / Kontrola 2. 6. 2016

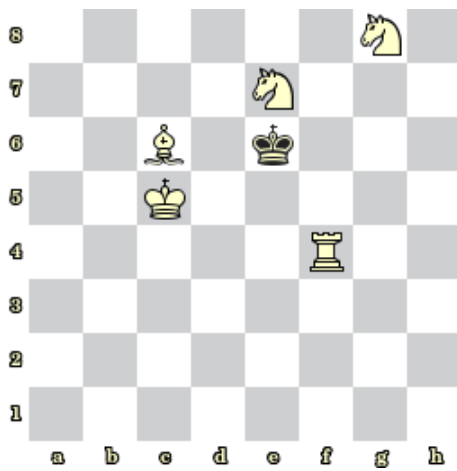


Diagram 1 – Bílý na tahu dá mat 2. tahem

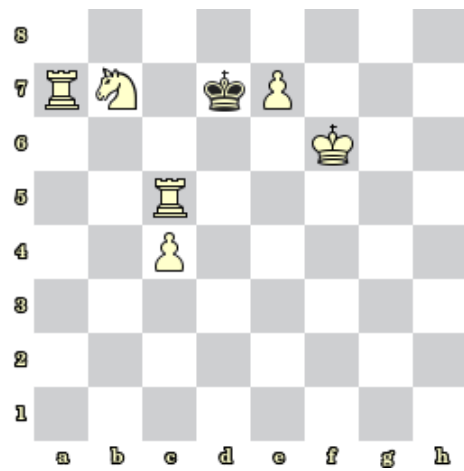


Diagram 2 – Bílý na tahu dá mat 2. tahem



Diagram 3 – ČNT. Najděte matový útok

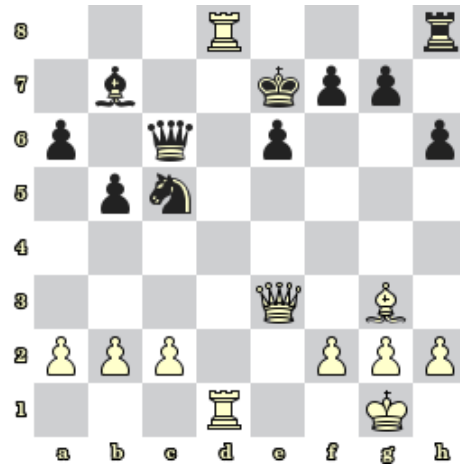


Diagram 4 – BNT. Najděte matový útok

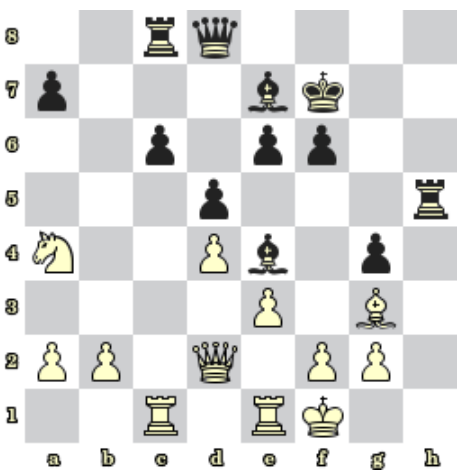


Diagram 5 – Černý na tahu vyhraje

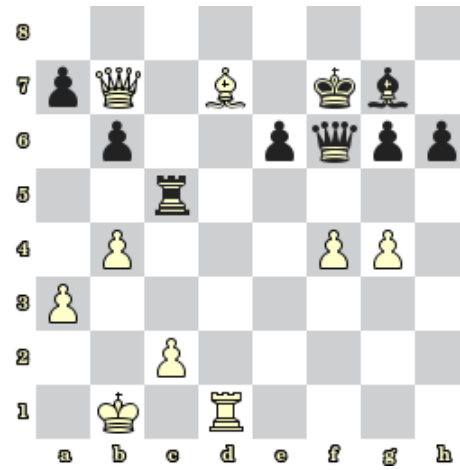


Diagram 6 – Bílý na tahu vyhraje



Diagram 7 – Bílý na tahu vyhraje

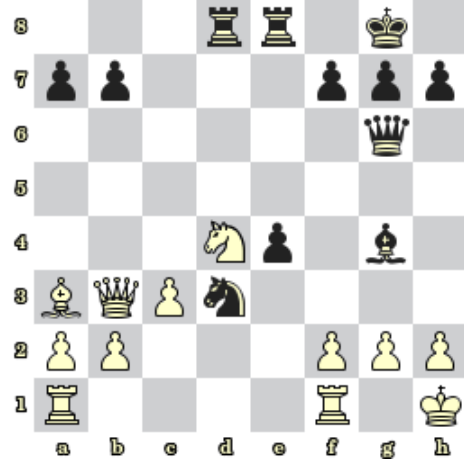


Diagram 8 – Černý na tahu vyhraje

Bonusové diagramy

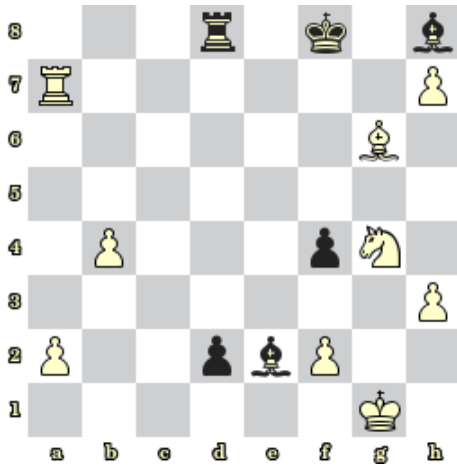


Diagram 9 – BNT. Najděte matovou kombinaci

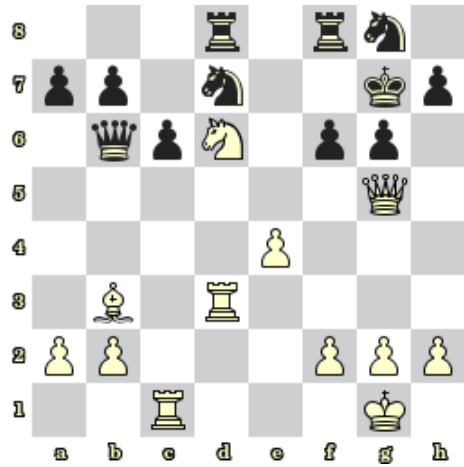


Diagram 10 – BNT. Najděte matovou kombinaci