

Sada diagramů č. 28a - Zadání 2. 6. 2016 / Kontrola 9. 6. 2016

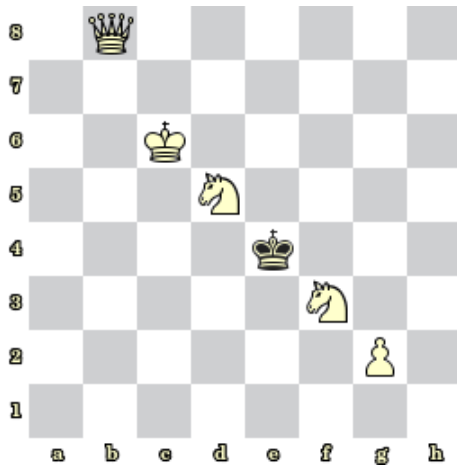


Diagram 1 – Bílý na tahu dá mat 1. tahem

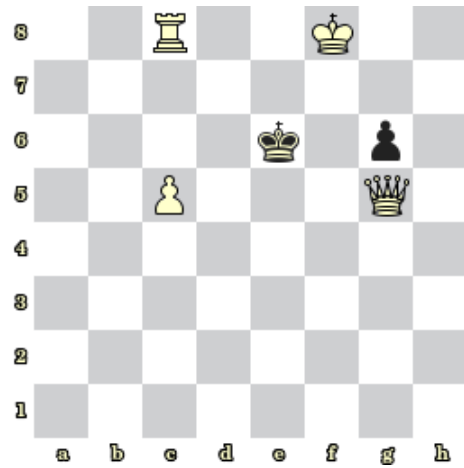


Diagram 2 – Bílý na tahu dá mat 2. tahem

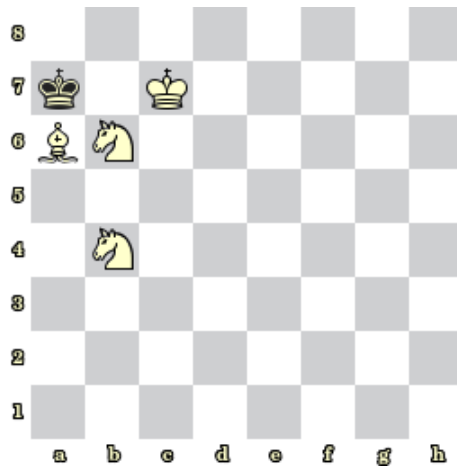


Diagram 3 – Bílý na tahu dá mat 2. tahem

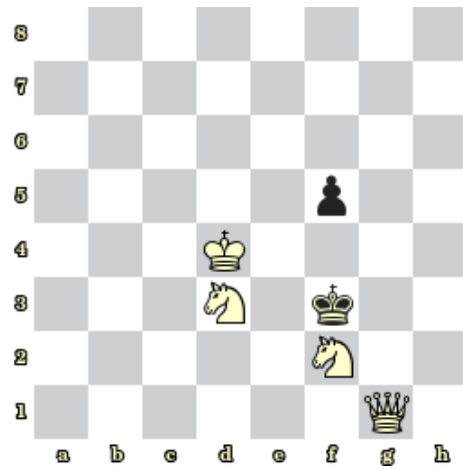


Diagram 4 – Bílý na tahu dá mat 2. tahem

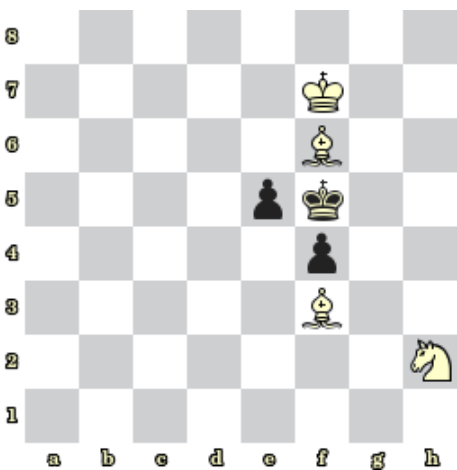


Diagram 5 – Bílý na tahu dá mat 2. tahem

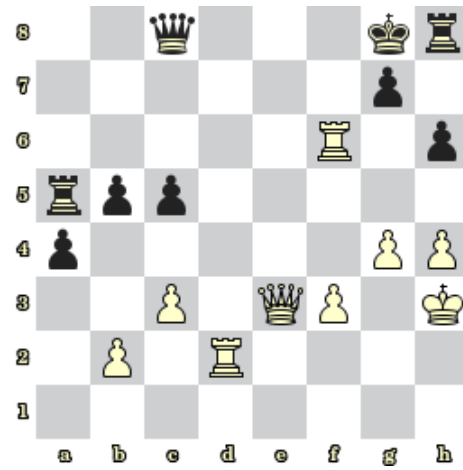


Diagram 6 – BNT. Najděte matovou kombinaci

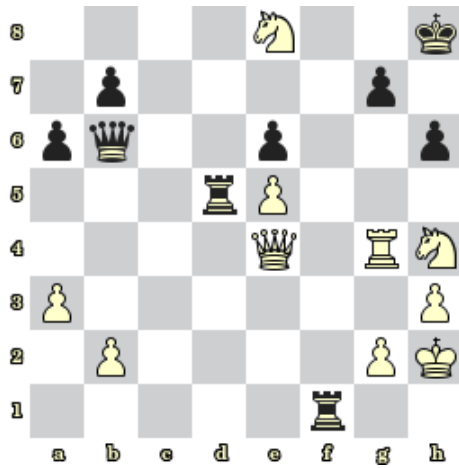


Diagram 7 – BNT. Najděte matovou kombinaci

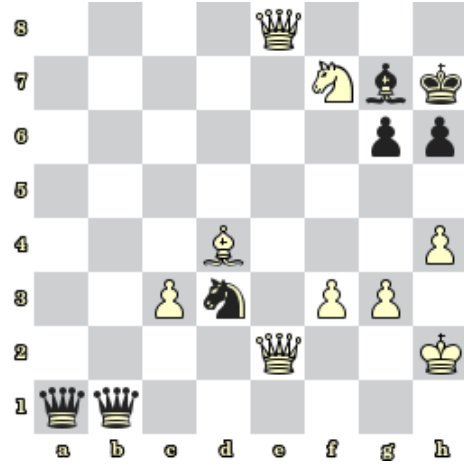


Diagram 8 – BNT. Najděte matovou kombinaci

### Bonusové diagramy

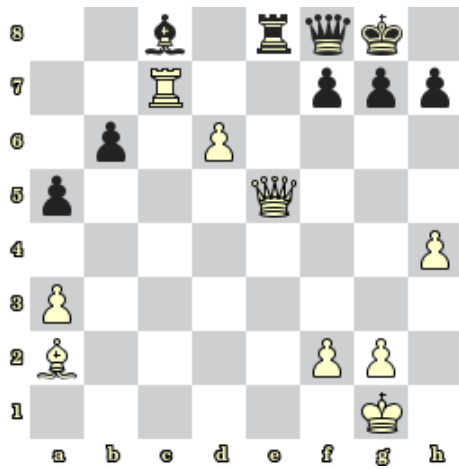


Diagram 9 – Bílý na tahu vyhraje

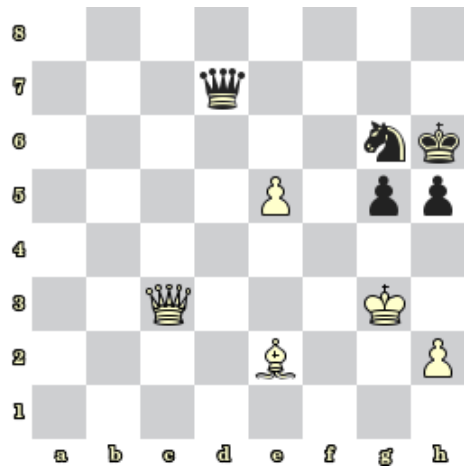


Diagram 10 – Černý na tahu vyhraje