

Sada diagramů č. 3a - Zadání 15. 10. 2015 / Kontrola 22. 10. 2015

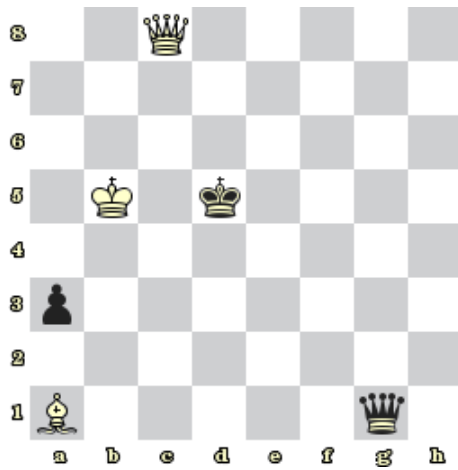


Diagram 1 - Bílý na tahu dá mat

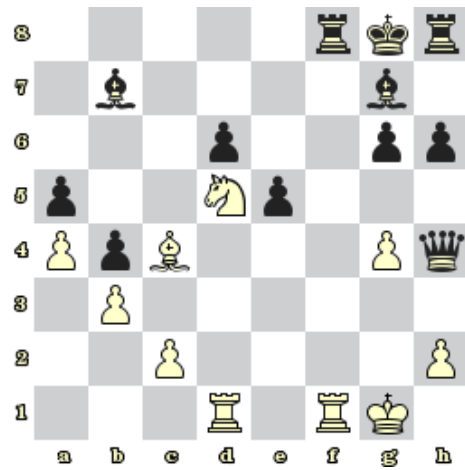


Diagram 2- Bílý na tahu dá mat



Diagram 3 - Černý na tahu dá mat



Diagram 4 - Bílý na tahu dá mat

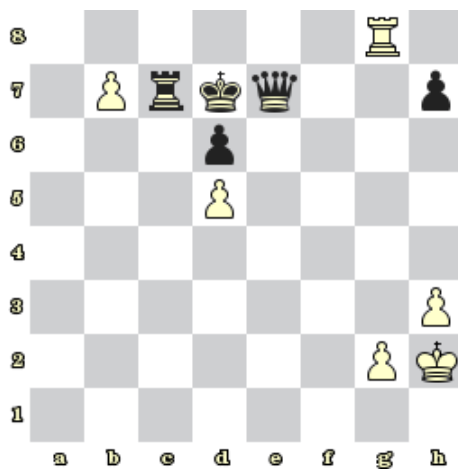


Diagram 5 – Bílý na tahu dá mat

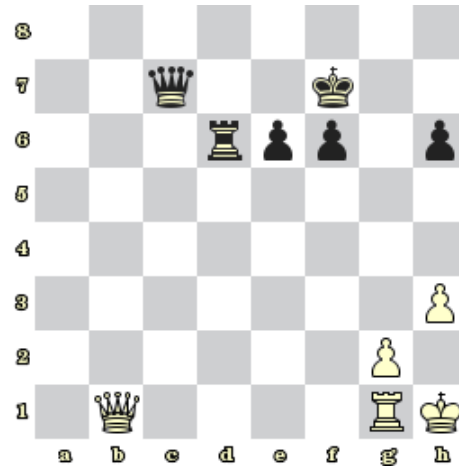


Diagram 6 – Bílý na tahu získá černou dámu

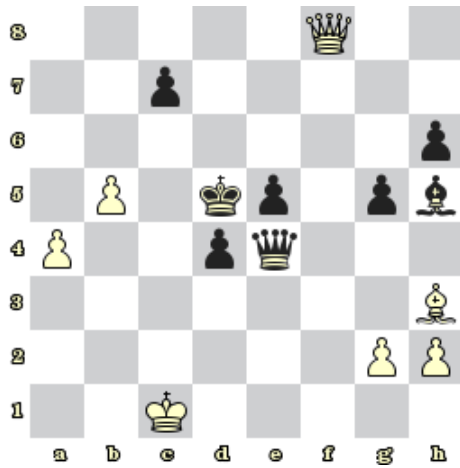


Diagram 7 - Bílý na tahu získá černou dámu

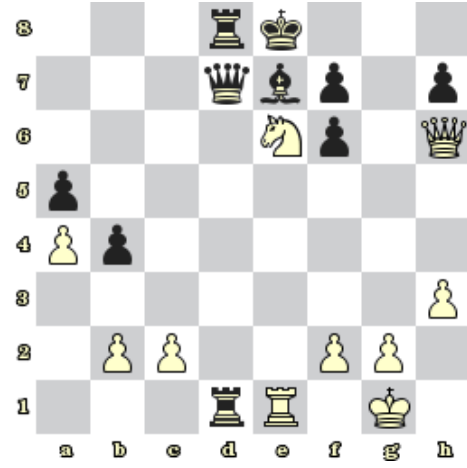


Diagram 8 – Bílý na tahu vyhraje

### Bonusové diagramy

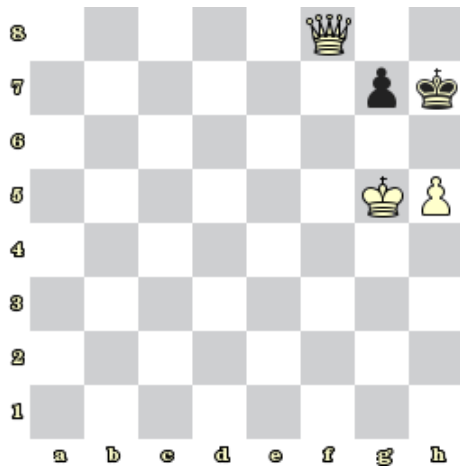


Diagram 9 - Bílý na tahu dá mat 2. tahem

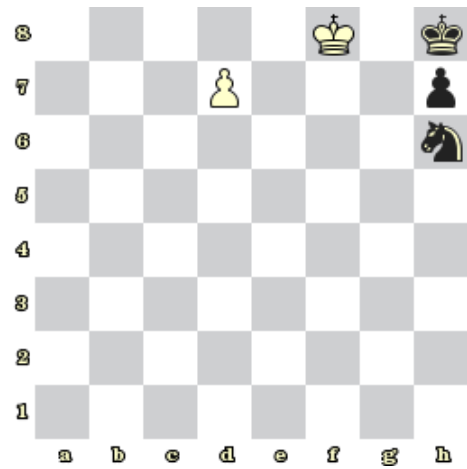


Diagram 10 – Bílý na tahu dá mat 2. tahem