

Sada diagramů č. 6a - Zadání 12. 11. 2015 / Kontrola 19. 11. 2015



Diagram 1 - Černý na tahu dá mat 1. tahem

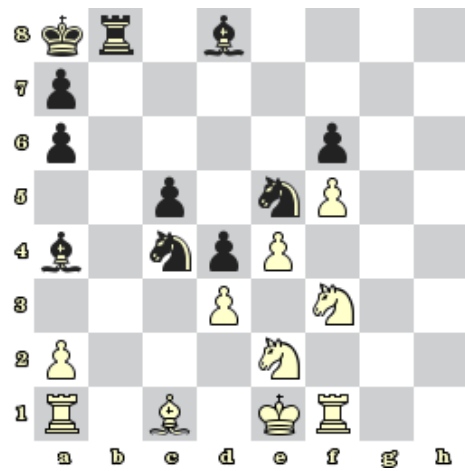


Diagram 2- Černý na tahu dá mat 1. tahem

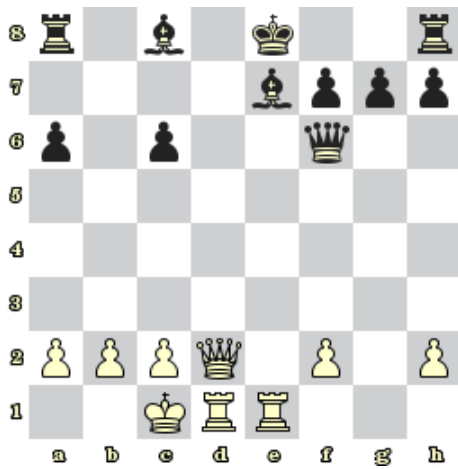


Diagram 3 - Bílý na tahu dá mat 1. tahem

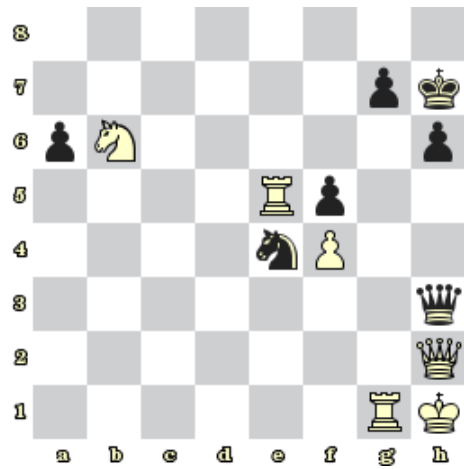


Diagram 4 – Černý na tahu dá mat 1. tahem

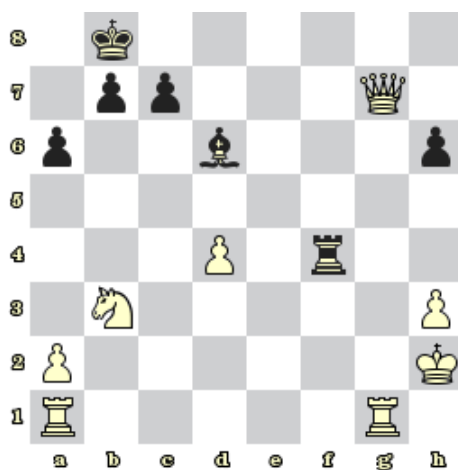


Diagram 5 – Černý na tahu dá mat 2. tahem

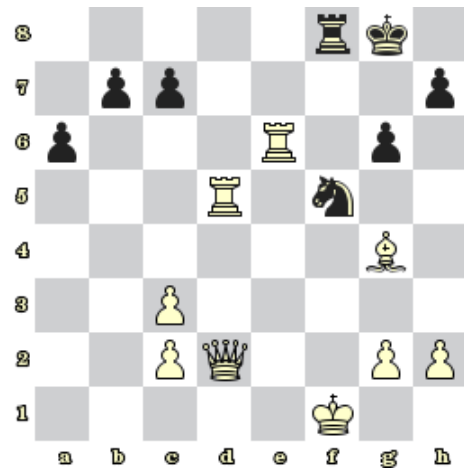


Diagram 6 – Černý na tahu dá mat 2. tahem

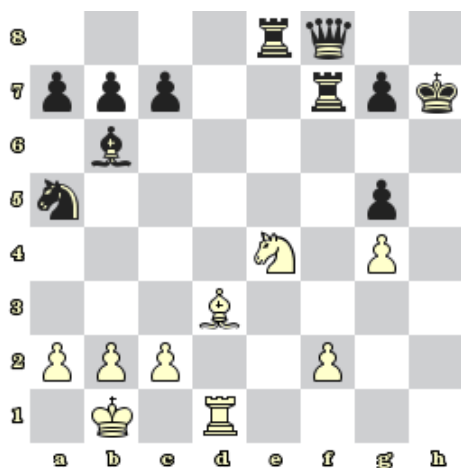


Diagram 7 - Bílý na tahu dá mat 2. tahem

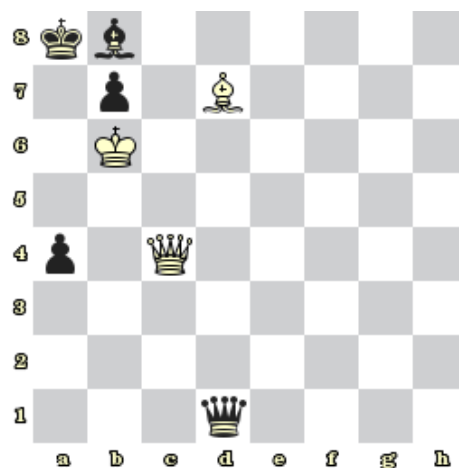


Diagram 8 – Bílý na tahu dá mat 2. tahem

Bonusové diagramy

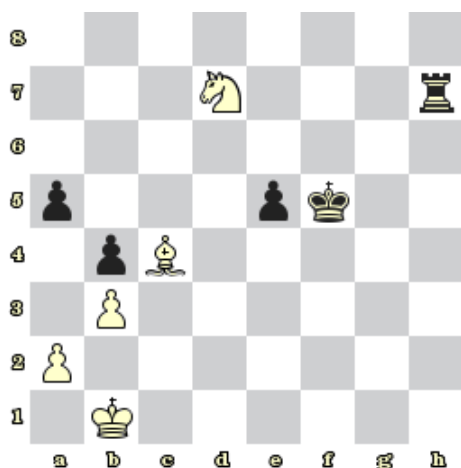


Diagram 9 – Bílý na tahu vyhraje (převaha figury)

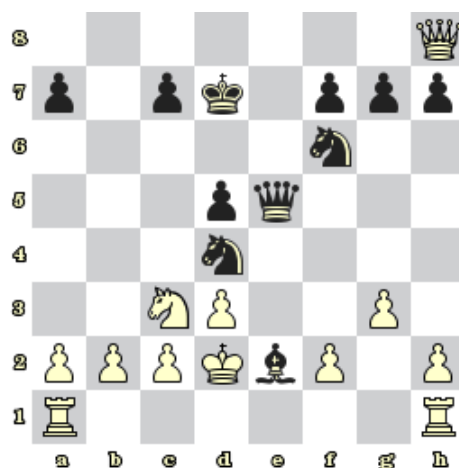


Diagram 10 – Černý na tahu vyhraje (dušený mat)