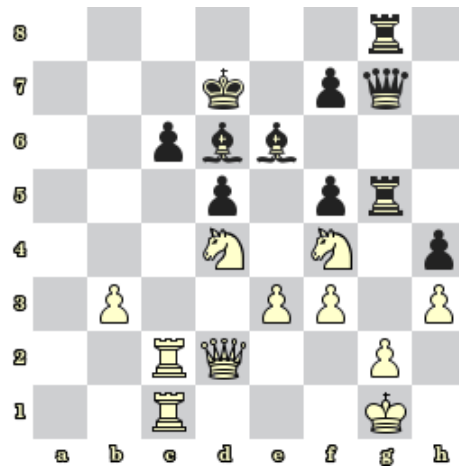


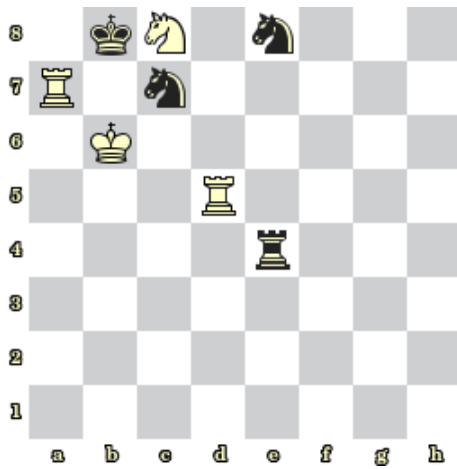
Sada diagramů č. 11c - Zadání 15. 12. 2016 / Kontrola 5. 1. 2017



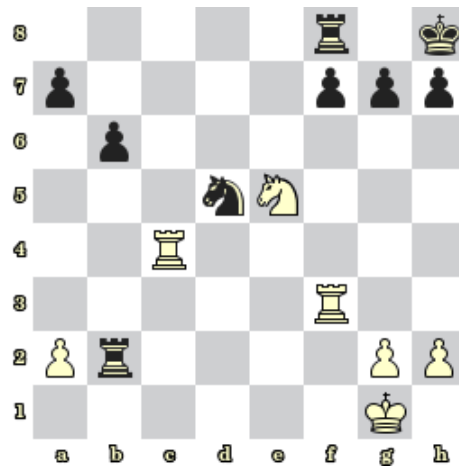
1) BNT – Najděte matovou kombinaci (1014)



2) Černý na tahu vyhraje (1021)



3) BNT – Mat 3. tahem (1026)



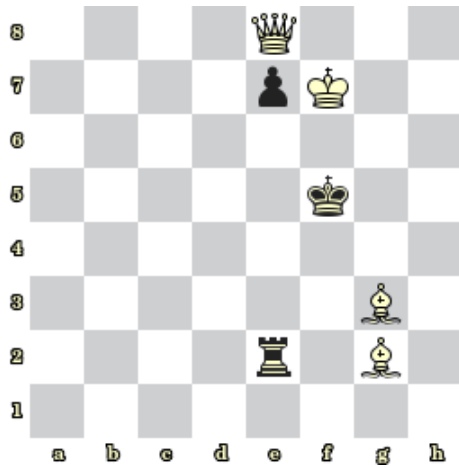
4) BNT – Najděte matovou kombinaci (1029)



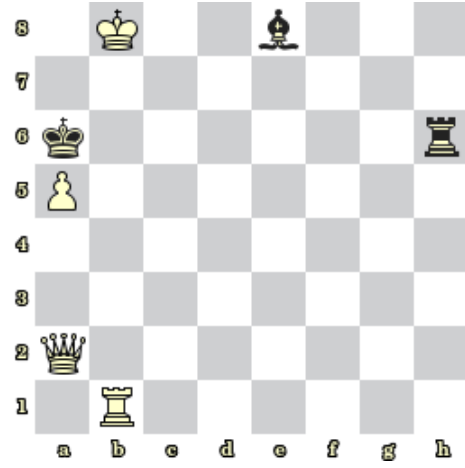
5) BNT – Najděte matovou kombinaci (1030)



6) BNT – Najděte matovou kombinaci (1031)



7) BNT – Mat 2. tahem (1034)

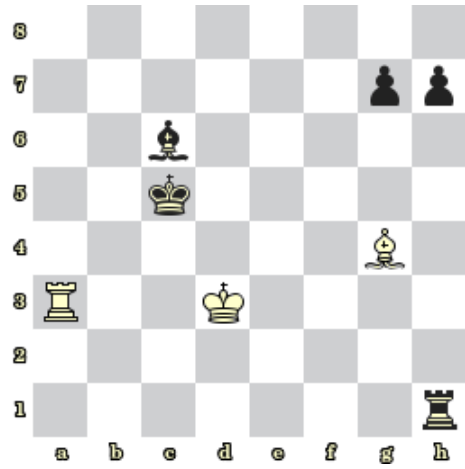


8) BNT – Mat 2. tahem (1035)

Bonusové diagramy



9) Bílý na tahu vyhraje (1028)



10) Bílý na tahu remizuje (1027)