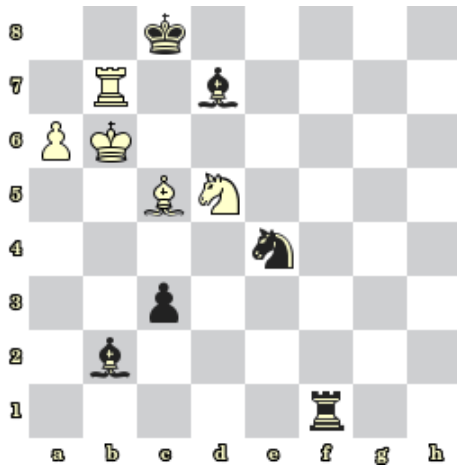
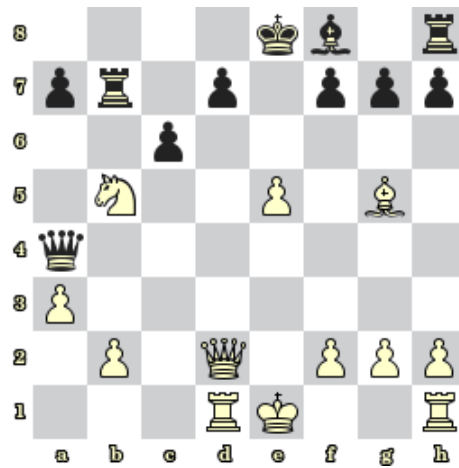


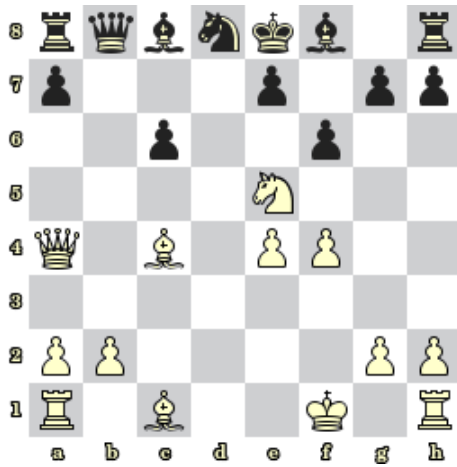
Sada diagramů č. 20c - Zadání 23. 3. 2017 / Kontrola 30. 3. 2017



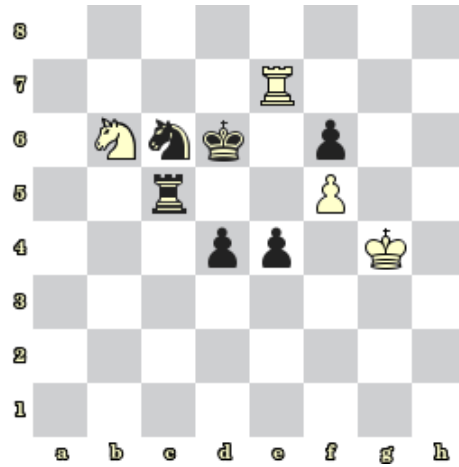
1) Bílý na tahu dá mat 3. tahem (1272)



2) Bílý na tahu dá mat 3. tahem (1273)



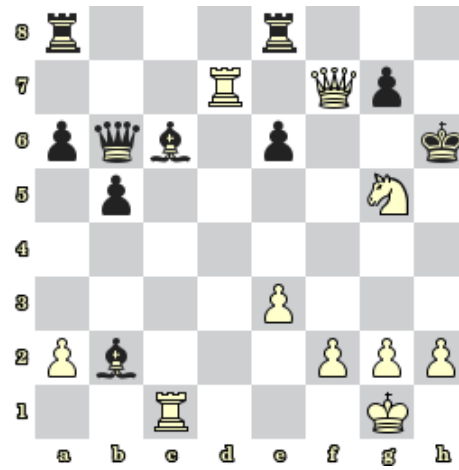
3) Bílý na tahu dá mat 3. tahem (1274)



4) Bílý na tahu dá mat 3. tahem (1275)



5) BNT – Najděte matovou kombinaci (1276)



6) BNT – Najděte matovou kombinaci (1277)

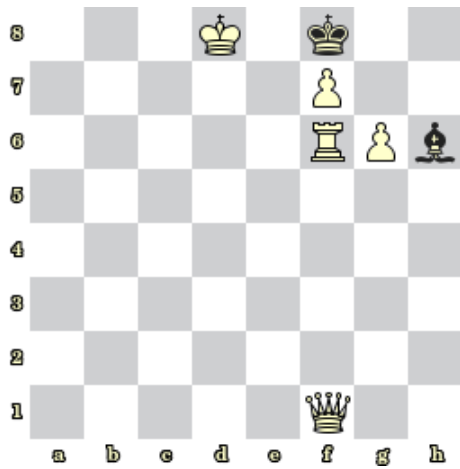


7) Bílý na tahu vyhraje (1278)

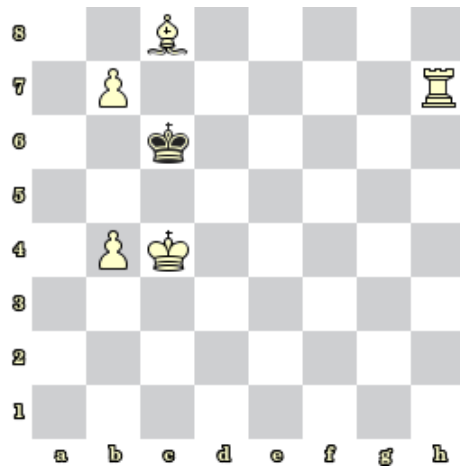


8) Bílý na tahu vyhraje (1279)

### Bonusové diagramy



9) BNT – Mat 2. tahem (1280)



10) BNT – Mat 2. tahem (1281)