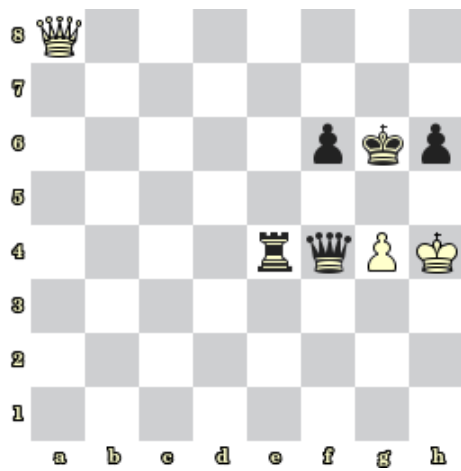
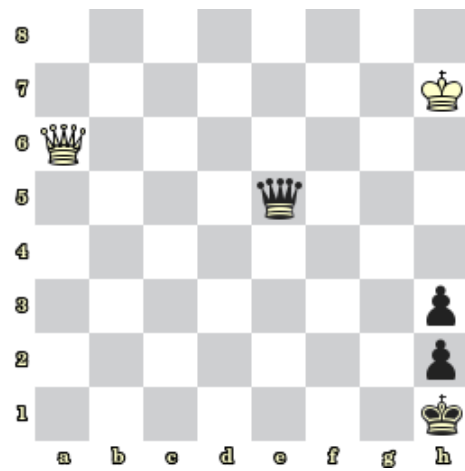


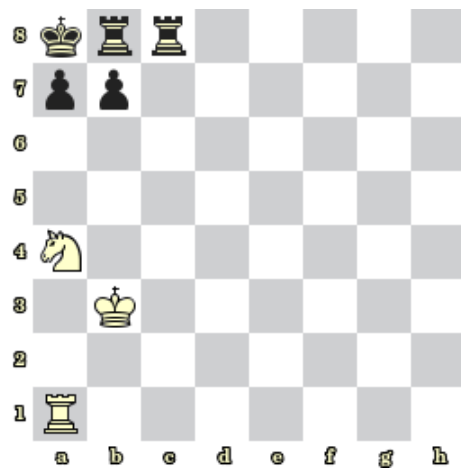
Sada diagramů č. 3a - Zadání 6. 10. 2016 / Kontrola 13. 10. 2016



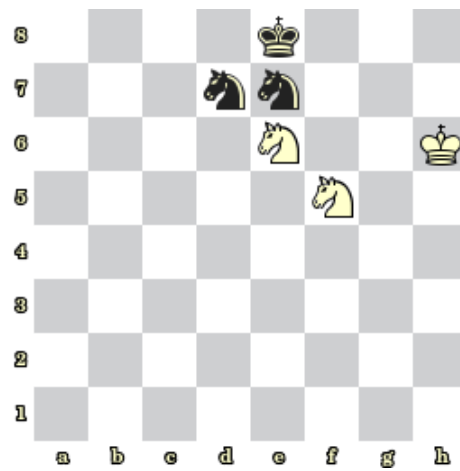
1) Bílý na tahu dá mat 1. tahem (841)



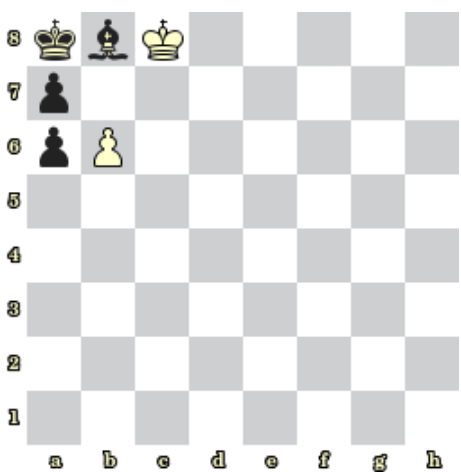
2) Bílý na tahu dá mat 1. tahem (842)



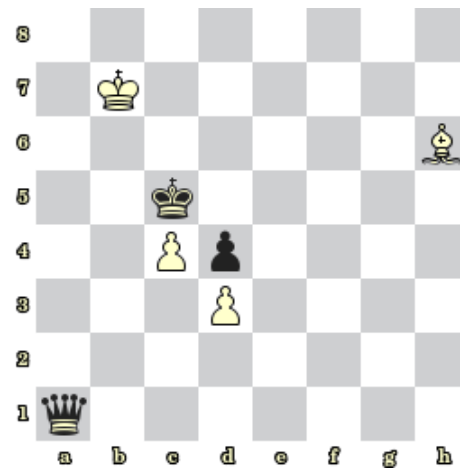
3) Bílý na tahu dá mat 1. tahem (843)



4) Bílý na tahu dá mat 1. tahem (844)



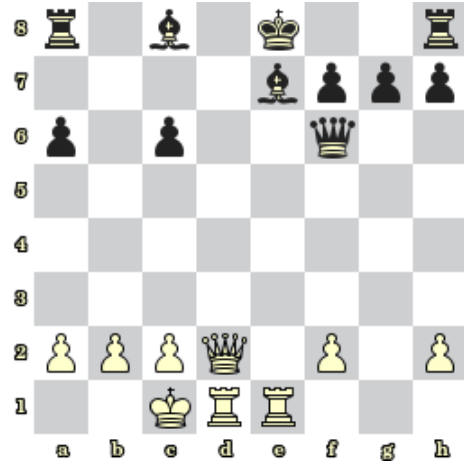
5) Bílý na tahu dá mat 1. tahem (845)



6) Bílý na tahu dá mat 1. tahem (846)

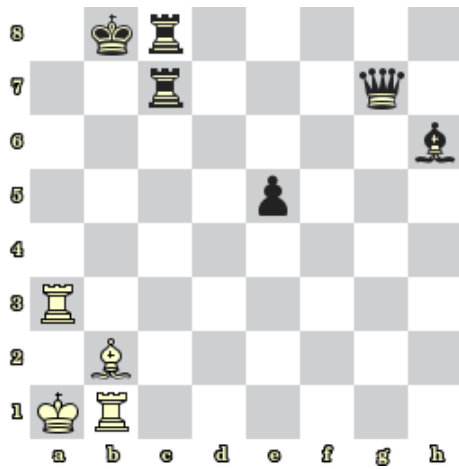


7) Bílý na tahu dá mat 1. tahem (848)

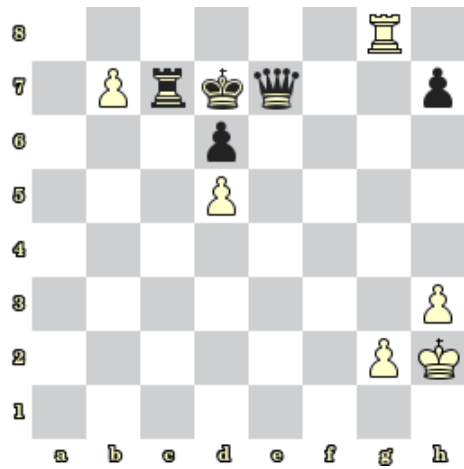


8) Bílý na tahu dá mat 1. tahem (849)

### Bonusové diagramy



9) Bílý na tahu dá mat 1. tahem (847)



10) Bílý na tahu dá mat 1. tahem (850)